

## *Sustainability at St. Paul's College*

Welcome to the Sustainability webpage of SPC. Here you'll find information about how we are contributing to a more sustainable future. With the aim of being a leading school in sustainability in Hong Kong, we have pledged to play a pivotal role in confronting the challenges of global sustainability through environmental stewardship.

### *What is the work of our sustainability?*

We run an array of activities for our students, including competitions, challenges, and workshops, to encourage students to save energy, save water, and reduce waste.

### *Our sustainability strategy*

Our Sustainability Strategy guides our commitment to building a sustainable campus, and informs our ambitious targets for contributing to the 17 United Nations (UN) Sustainable Development Goals.



## ***Our achievements – Building a sustainable campus***

### **Water Dispensers**

Two smart water dispensers designed by Mok Chun, Daniel (F.4C, 2022) and Mak Wai Nok, Enoch (F.4F, 2022) were installed on the Podium as part of the Pilot Programme organised by the Environmental Protection Department. The programme aims to inculcate the habit of "bringing your own bottle", and reduce the use of single-use disposables to reduce plastic waste at its source.

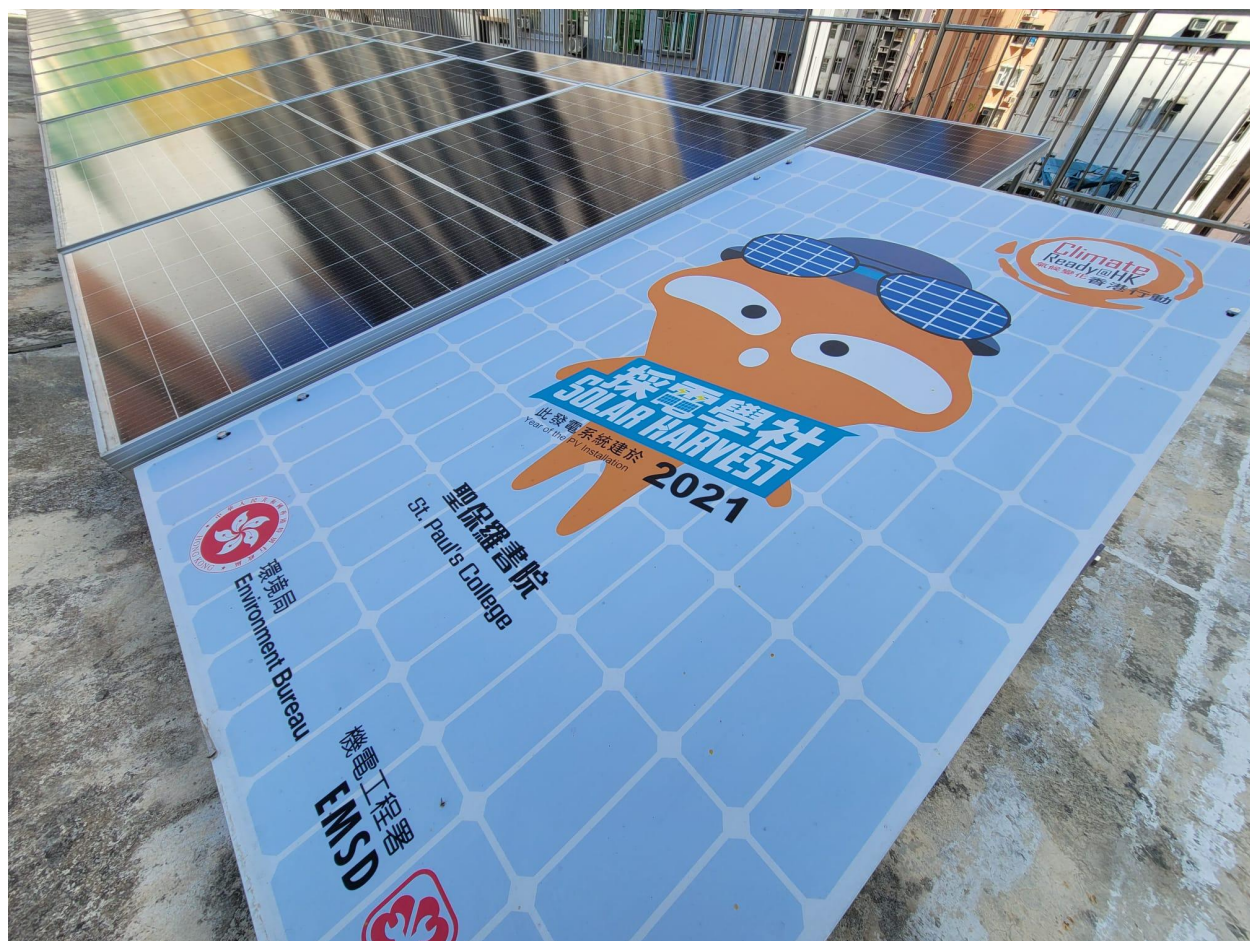




## Solar Panels

70 solar panels were installed on the rooftop of the new classroom block in Phase I and II. These panels were fully funded by the “Solar Harvest” scheme, a Government programme promoting the development of local renewable energy. The College also joined the Feed-in Tariff (FiTT) Scheme to generate 18,000kWh of electricity a year. The FiTT payment supports the ongoing operation and maintenance of the system, as well as environmental education programmes for students.







## **Gardening**

To promote care for nature among our students, and to cultivate their interest in gardening, the College joined the “One Person, One Flower” Scheme organised by the Leisure and Cultural Services Department in 2021-2022. Over 50 pots of flowers planted by the club members and other students were sold, with the funds raised going to the Community Chest.



## Green Campus

The College also joined the "Jockey Club BEAM Plus in Schools Projects" organized by Hong Kong Green Building Council and Business Environment Council. The project instilled the concept of green building, helping students and staff members to **reduce our carbon footprint by installing light sensors, LED lights, tap aerators and inverter air-conditioners**. Experts in green education also organised learning activities for our students and assisted the College in conducting a green audit. The College was honoured to be one of the three pioneer schools in Hong Kong to receive the BEAM Plus Existing Schools outstanding certificates in the categories of i) Sustainable Leadership and Learning, ii) Sustainable Campus Environment, and iii) Health, Comfort & Happiness. These awards recognise our endeavours in sustainability development, green education, and driving behavioural change through education. The Green Rating certified by the Hong Kong Green Building Council Limited will be valid for 5 years, until 2027.



hereby certifies that 特此證明

### St. Paul's College

聖保羅書院

69 Bonham Road, Hong Kong

般咸道69號

has achieved **Green** rating under  
BEAM Plus Existing Schools V1.0 Beta Version

獲得綠建環評既有學校 (1.0測試版本)「綠建學校」評級



Outstanding Performance obtained in the following categories:  
在以下範疇獲得卓越表現



Sustainable Leadership and Learning  
可持續領導及學習



Sustainable Campus Environment  
可持續校園環境



Health, Comfort & Happiness  
健康、舒適、快樂



Mr CHEUNG Hau-wai, SBS  
Chairman  
Hong Kong Green Building Council Limited  
香港綠色建築議會有限公司 主席  
張孝威先生 綠建環評主席

Issue Date: 17 October 2022 (Valid for 5 years)  
簽發日期：二零二二年十月十七日 (有效期5年)

HKGBC0000000007





## **Air Quality Sensors**

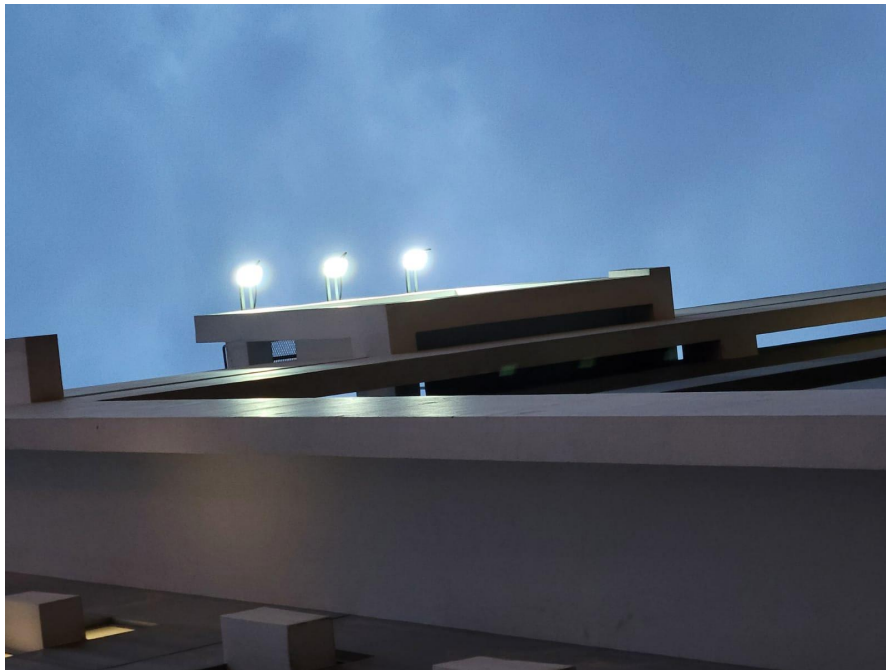
Indoor air quality (IAQ) is known to affect our health, comfort, and well-being. The College has been closely monitoring the levels of PM 2.5, PM 10, CO<sub>2</sub>, HCHO, and TVOC inside staff rooms, classrooms, and special rooms. Air Quality Sensors have been installed inside all classrooms to monitor indoor temperature, air particles, and gases remotely through mobile apps. Air purifiers were also installed in all classrooms and staff rooms to protect the health of students and staff members.





## **Green Initiatives**

Different school organisations have been putting forward creative ideas to share green responsibilities and commitments. Traditional spotlights for the College Badge on the South Wing Building were replaced with three solar lights to make good use of renewable energy. Wooden umbrella racks were turned into umbrella dryers to reduce the consumption of plastic bags. The PTA organises the Campus Service Project every summer to repaint and recycle furniture. The Green Club looks after the green corners on campus to improve greenery at the playgrounds and on the rooftop.







## Green Policy

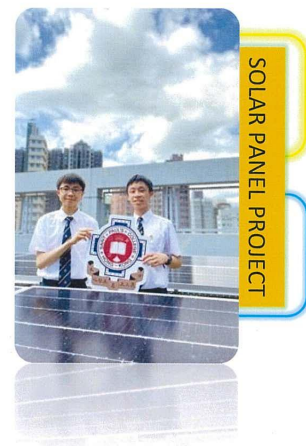
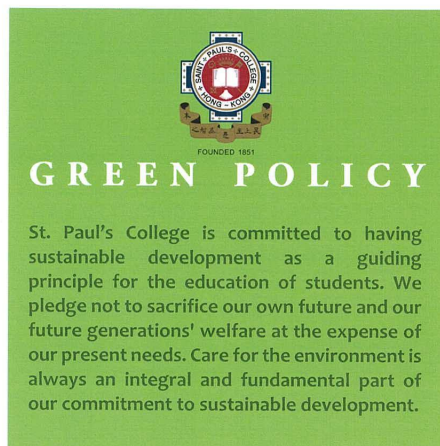
The school-based Green Policy was established in 2020 to raise awareness of environmental protection among all staff members, students, and parents. The Green Policy is a milestone for stakeholders to adopt a whole-school approach to sustainable development. Students, staff members and parents collaborate with one another to save energy, resources and water by implementing pledges. Pledges for green procurements and resources conservation on campus will have a huge impact on the environment.

### OBJECTIVES

- To arouse the awareness of environmental protection among all staff members, students and parents.
- To adopt a whole school approach towards sustainable development.
- To instil good habits in students and staff members to reduce carbon footprint.
- To actively promote principles of sustainability across all areas and build a green culture at school.

### GREEN PROCUREMENT POLICY

- Purchase electronic appliances that meet the requirements of the energy efficiency labels.
- Introduce energy-efficient features in all buildings, especially new buildings.
- Carry out retrofitting where necessary to save energy.
- Explore opportunities to use renewable energy or alternative fuel.
- Prepare guidelines and user tips to assist students and staff members in practicing the conservation measures.
- Strive to promote energy conservation and proper energy management.







## RESOURCES CONSERVATION

### USE OF ELECTRONIC DEVICES

Electronic devices such as computer monitors, printers, projectors, air-purifiers, visualizers and photocopying machines will be either turned off or switched to sleep mode when not in use.

### USE OF AIR-CONDITIONERS

- The temperature of classroom air-conditioners will not be exceedingly low. In general, the temperature will not be set below 20°C.
- Classroom doors will be kept closed when air-conditioners are in use.
- Air-conditioners will not be used during wintertime (or when the temperature falls below 20°C).
- Air-conditioners will be cleaned regularly to maximize its energy efficiency.

### USE OF LIGHTING

When a venue is not in use, all lights will be turned off. Light sensors, solar lights and LED lights will be used when carrying out retrofitting.

*J.Y. Yuen*



The Green Pledge outlines simple ways St. Paul's College can have a significant impact on the environment. Although the actions may seem small and insignificant on the individual level, by working together the College can make a huge impact. Students and staff members are also encouraged to help their families save energy, resources and water at home by implementing these pledges.

### SINGLE-USE PLASTICS

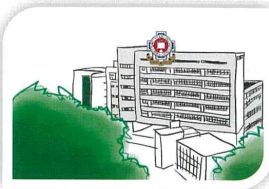
- The tuckshop will not provide plastic utensils.
- Disposable straws and utensils will only be provided upon request.
- Bottled water will not be sold at Tuckshop. More smart water dispensers will be installed.
- Teachers and students are encouraged to use their own water bottles for water refill.
- Teachers and students are encouraged to use reusable food containers for their meals.
- Plastic bottles will be recycled and reused.
- The use of plastic bags will be kept to the minimum.

### USE OF PAPER

- Electronic copies or printing with draft paper will be used for circulation of draft documents.
- Electronic copies will replace hard copies whenever possible.
- Single-sided paper will be reused as draft paper and double-side printed paper should be placed in the recycling bin.
- Double-sided printing will be the default setting.
- Mass printing will be kept to a minimum.

### USE OF WATER

- Sensor water-saving taps will be installed in washrooms.
- Single-serving bottled water will not be provided in school activities and events whenever possible.



## *Education for Sustainable Development (ESD)*

### ESD Wheel of SPC



### Common Core: Extended Study in Senior Form Curriculum

This is a two-year school-based supra-curricular program that ensures that every senior student develops personal experiences above and beyond the conventional syllabus in terms of skill, knowledge, and attitudes and values. It aims to:

- provide a practical preparation for undergraduate research\*\* (Skill)
- create an opportunity for students to investigate a topic of personal interest, which relates to one of the student's elective subjects, and take the interdisciplinary approach of an extended global study (Knowledge)
- develop global sensitivity - a sensitivity to local phenomena and experiences as expressions of developments on the planet and cultivate global self - a developing perception of self as a global actor and member of humanity, capable of making a positive contribution to the world (Attitude and Value)

\*\* An extended study can be undertaken as one of the assessment tasks of the new Common Core in senior forms, where students carry out an in-depth interdisciplinary study of an issue of contemporary global significance in Form 4 and 5, across at least two DSE subjects (Citizenship and Social Development + One of the elective subjects in DSE).

## **The Sustainability in Education Team**

The Sustainability in Education Team helps develop the education for sustainable development at SPC. SPC is a member school in the UNESCO ESD Schools Network, and will become a member school of UNESCO ESD Experimental Schools in the future. The team is composed of four teachers, all of whom have completed the UN SDGs Certified Teacher Training.

## **Student Sustainability Society**

The Student Sustainability Society is a student-led society in helping the college community in meeting its sector-leading sustainability commitments.

*Sustainability Ambassadors* are trained to:

- create inspiring sustainability projects, and engage community development techniques;
- carry out projects related to local sustainability priorities, issues and initiatives; and
- strive to design engaging content which is inclusive and reflective of our diverse global community.

*Members of the Society* will have the opportunity to:

- study sustainability and gain inspiration from creative initiatives from the Sustainability Ambassadors within our college campus and the local community;
- develop their skills in project management, sustainability, teamwork, and communications; and
- become enthusiastic about sustainability issues and ready to help make this change possible.



## **Community-based Actions and Awards**

- Second-runner up, The Most Active Participation UNESCO Peace School Award 2021-2022 UNESCO Peace School by UNESCO Hong Kong Association Glocal Peace Centre
- Sustainable Development School Award Programme (2021-2022 Community Project Award) by Council for Sustainable Development
- Sustainable Development School Award Programme (2010-2020 School Project Award) by Council for Sustainable Development
- 2022-2023 "Towards Net-Zero School" Project of UNESCO Hong Kong Association

## **News**

Catch up on the latest environment and sustainability news from us.